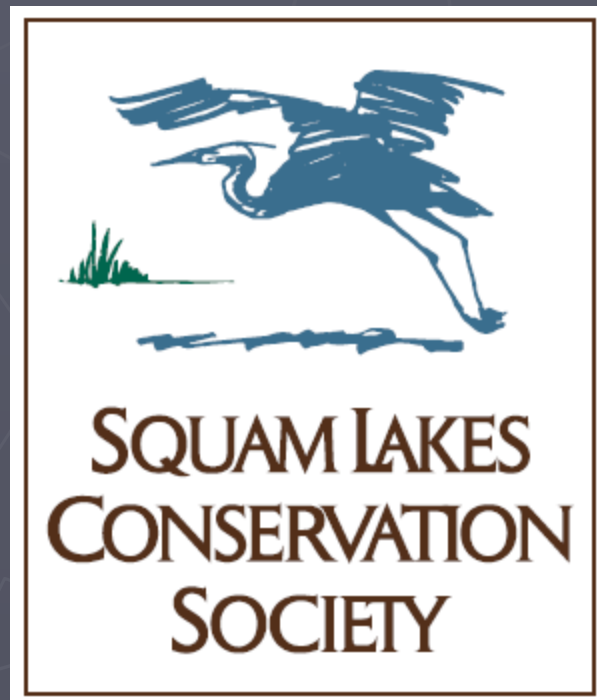


Squam Lakes Conservation Society

“Squam’s Land Trust”

“The Society’s mission is to preserve the unique quality and character of the Squam watershed by protecting lands for present and future generations”





Founded in 1960

700 member households

Annual Budget = \$600,000

177 projects (30% of watershed)

75% of transactions by donation



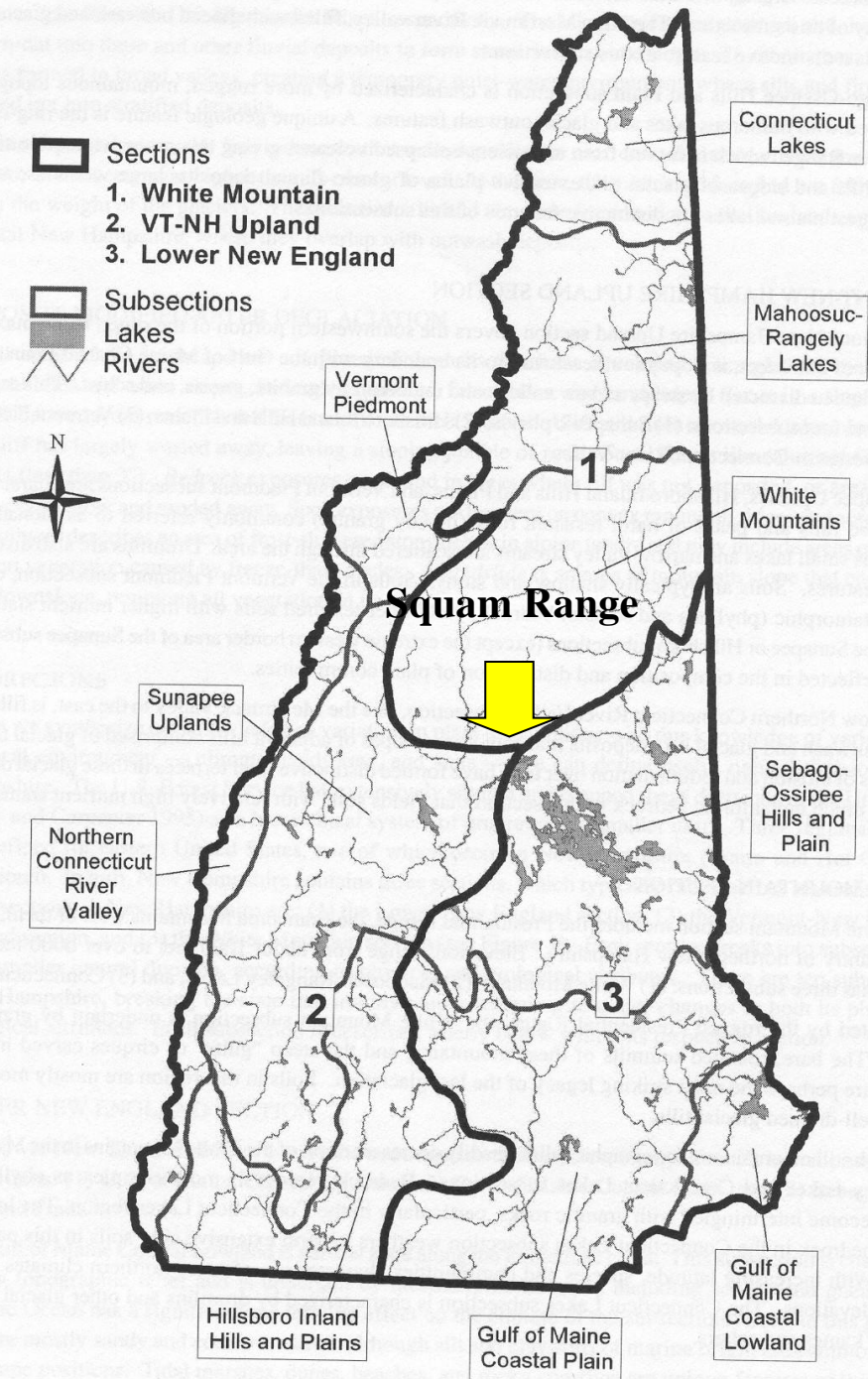
There's something about Squam

- 2nd largest lake entirely in NH
- Geographic center of NH
- Intersection of 3 eco-regions
- Abundant recreational opportunities
- Prevailing conservation ethic





Ecoregions of New Hampshire



A strong sense of place



SQUAM



2004 by
Rachel Carley

*"Readable, fun, fascinating,
even inspiring..."*
— Judson D. Hale Sr., Editor-in-Chief,
YANKEE Magazine

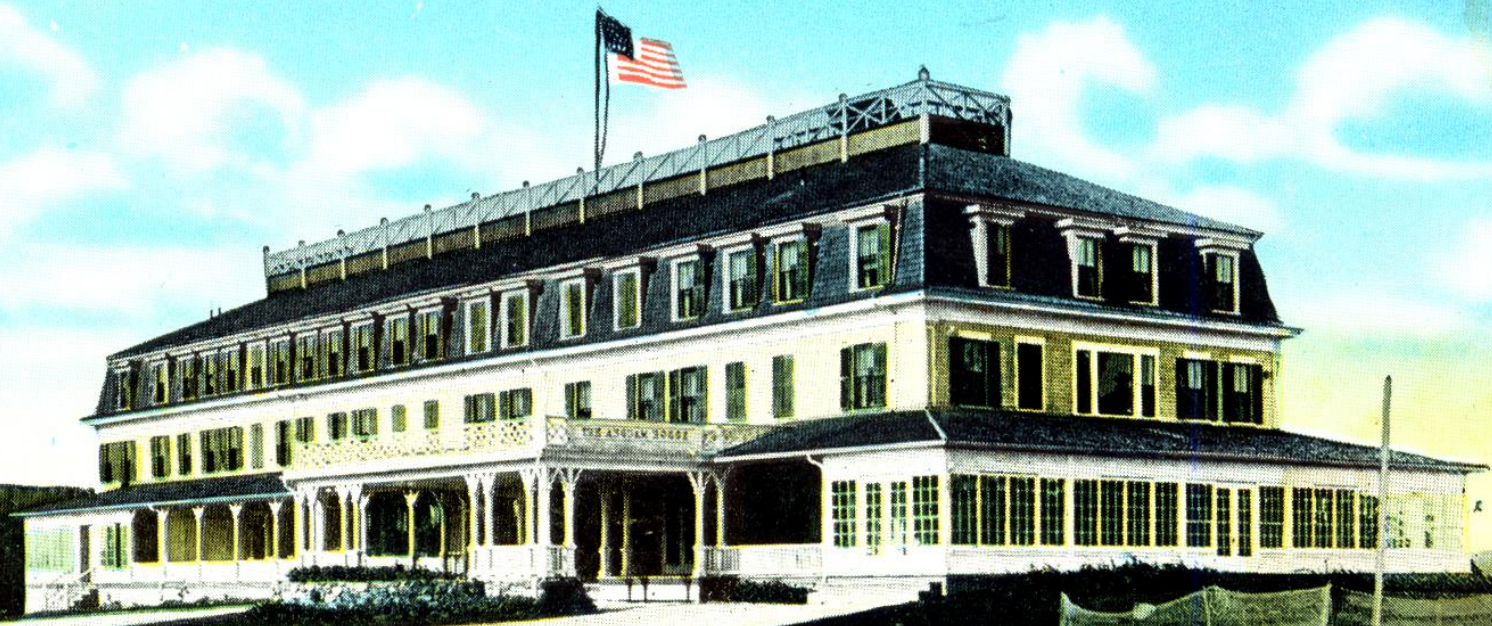
Birthplace of Youth Camps



Members of the Camp Chocorua community lounge on the shore, circa 1881 (above). Pictured from left are: Hobart Nichols, one of the first campers; the boyish Emily Balch (leaning on a rock); Charles Davis, a faculty member; Ernest Balch, camp founder; and Charles Applegate, another staff member. Lyrics for the camp song (below) mention honesty and duty.



Asquam House, Holderness, N. H.



NRHP Multiple Property Designation

Goal: protect the cultural heritage of the watershed by recognizing historic barns, camps, and landscape features.



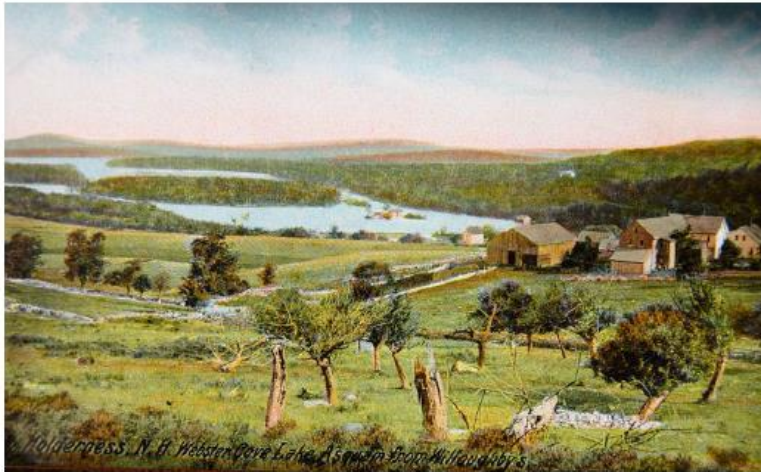
17 properties
275 historic resources
1,200 acres

“Keeping the stories alive”



SQUAM
The Evolution & Preservation
of a Lakeside Community

NATIONAL REGISTER MULTIPLE PROPERTY
DOCUMENTATION/COVER FORM



Prepared by
Elizabeth Durfee Hengen
Preservation Consultant
Concord, NH

April 2012
Second printing June 2013

endorsed by the National Park Service
August 2012

a quiet archive for Squam

POINTFIELD
(AKA LIONGATE)
Sandwich, New Hampshire

NATIONAL REGISTER OF HISTORIC PLACES NOMINATION
Listed October 2014



Prepared by
Elizabeth Durfee Hengen
Preservation Consultant
Concord, NH

Pointfield is part of the
National Register Multiple Property Listing
Squam: The Evolution and Preservation of a Lakeside Community

BEEDE FARM
Sandwich, New Hampshire

NATIONAL REGISTER OF HISTORIC PLACES NOMINATION
Listed August 2012



Prepared by
Elizabeth Durfee Hengen
Preservation Consultant
Concord, NH

Beede Farm is part of the National Register Multiple Property Nomination
Squam: The Evolution and Preservation of a Lakeside Community



National Register of Historic Places

 Squam Viewshed Boundary
 Conservation Areas



Map created by J.Turley
Revised March 2012

Conservation Easements

Permanent, legally binding agreement between a landowner and a land trust that restricts use of the land to protect its significant natural resources.

NH RSA 477:45-47



Bundle of Rights

Fee: 100%

Partial:

- Conservation Easement
- Timber
- Water
- Gravel
- Rights of Way
- Buildings
- Etc.



Points about CE's

Ownership remains with landowner

Granted to a “qualified organization”

Permanent (runs with the land)

Often extinguishes building rights

Public access not mandatory



Public Benefit aka: conservation purpose



- ▶ Significant natural habitat
- ▶ Public recreation & education
- ▶ Open space: scenic enjoyment
- ▶ Pursuant to government policy
- ▶ Historic value



Kinship and Landscape at Squam Lake

by Derek Brereton

"The types of experiences which old camps avail their indwellers are instrumental in the camps' own preservation and bequeathal."



Kirk Campstead Easement

Statement of Significance

- ▶ Squam's 2nd oldest camp
- ▶ Maintain historic integrity of neighborhood
- ▶ Scenic value
- ▶ Manifestation of Family's ethos:
 - "Too fancy is not camp"



Campstead Easements

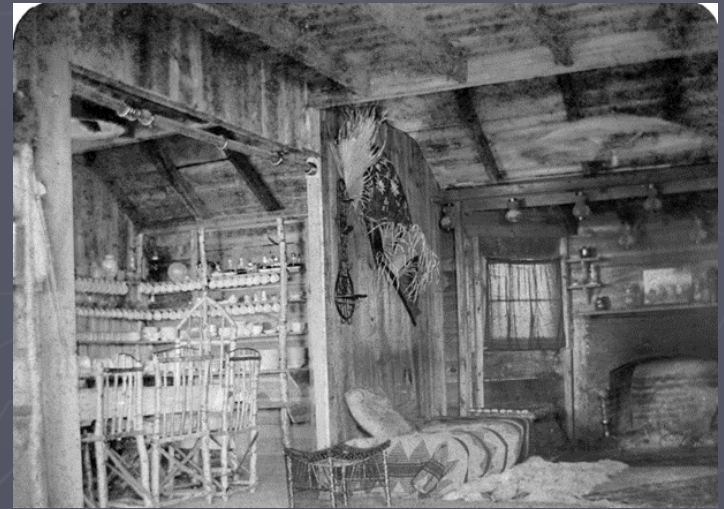
Ownership remains with landowner

Building may be replaced in like-kind

Granted to a “qualified organization”

Permanent (runs with the land)

Public access not mandatory



Forever is a long time

- ▶ Legal defense
 - Terra Firma
- ▶ Stewardship responsibilities
 - Monitoring annually
 - Keeping careful records



Thank You!

